

47427 HALCYON PLACE, STERLING, VA

©2017 T. DILLARD

WWW.INTERIORFOOTPRINTS.COM

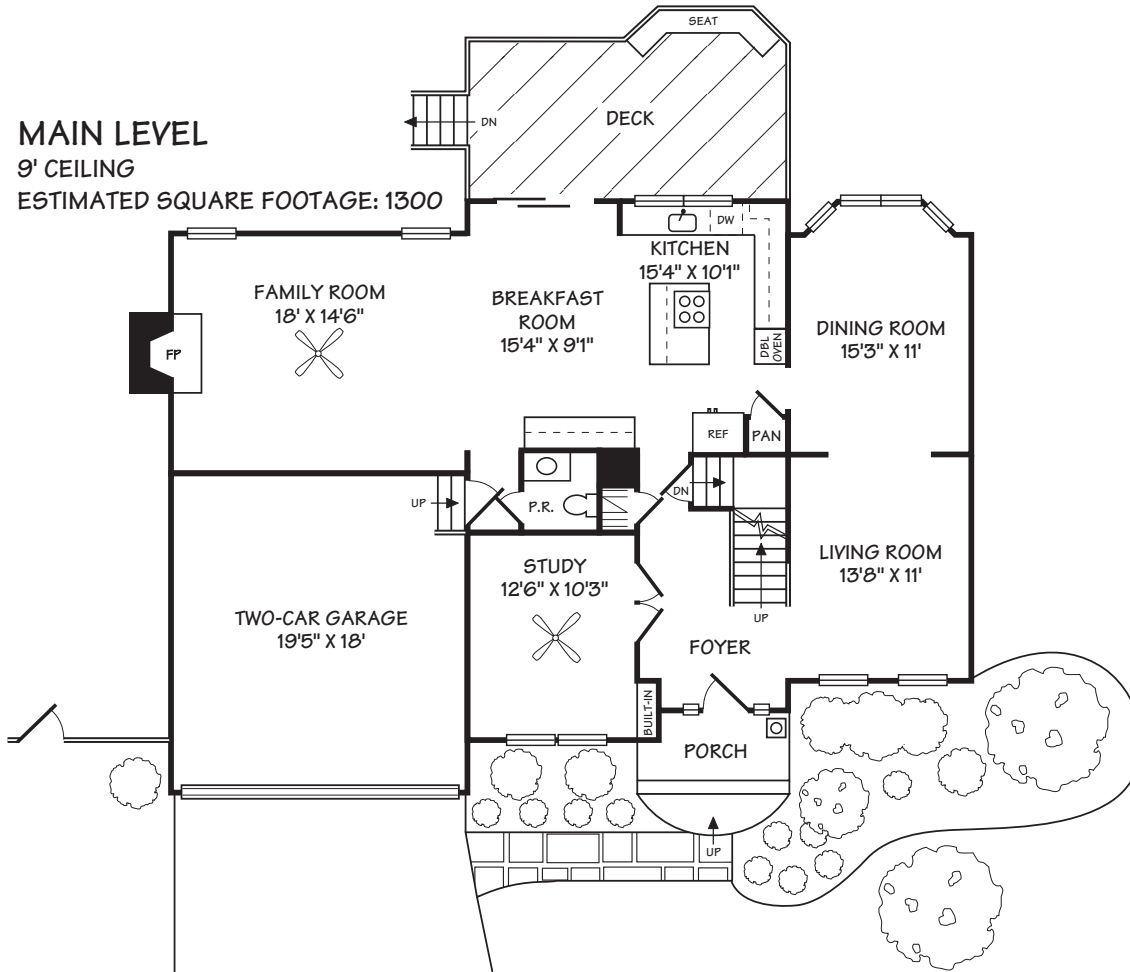
ALL ILLUSTRATIONS, DIMENSIONS AND SQUARE FOOTAGE ESTIMATES ARE APPROXIMATE AND MAY VARY FROM ACTUAL STRUCTURE. DIMENSIONS HAVE BEEN ROUNDED.

ESTIMATED SQUARE FOOTAGE: 3800

MAIN LEVEL

9' CEILING

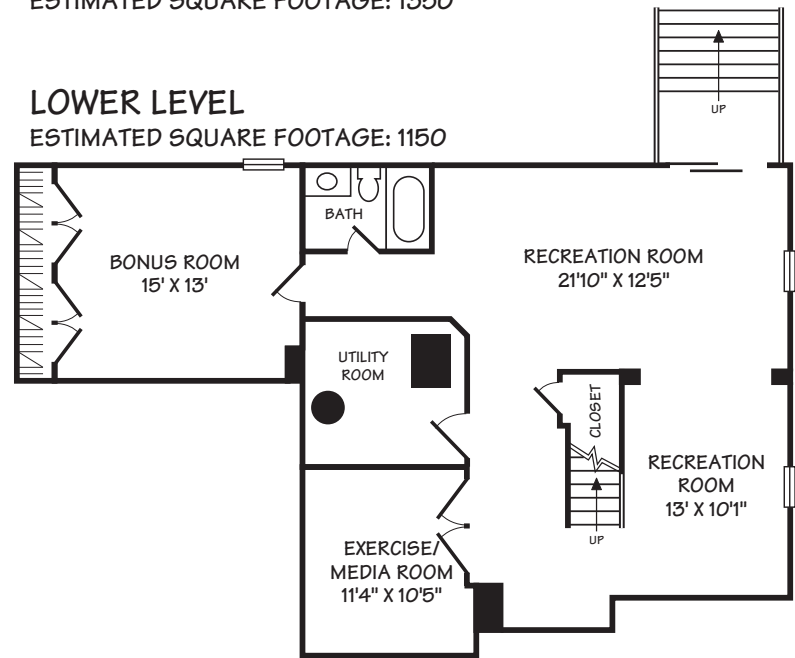
ESTIMATED SQUARE FOOTAGE: 1300



SECOND LEVEL

8' CEILING

ESTIMATED SQUARE FOOTAGE: 1350



LOWER LEVEL

ESTIMATED SQUARE FOOTAGE: 1150