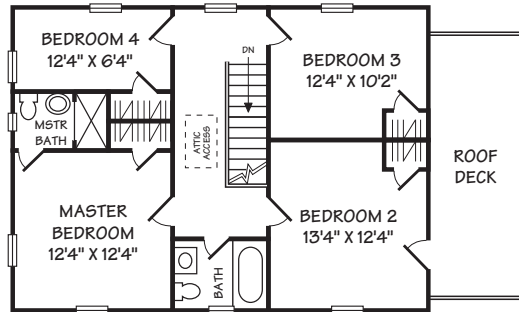


**THIRD LEVEL**



**SECOND LEVEL**

8' CEILING  
ESTIMATED SQUARE FOOTAGE: 900

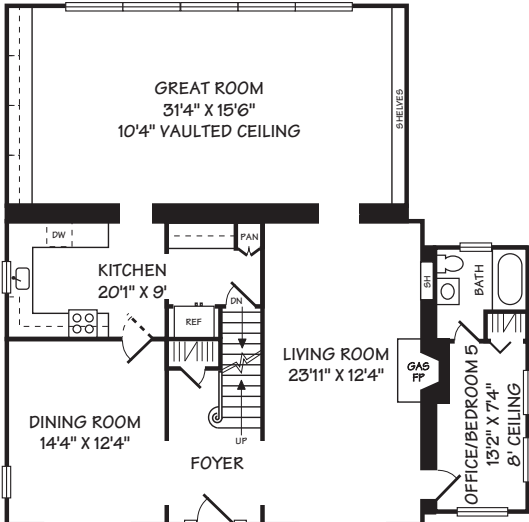
2353 SOUTH MEADE STREET, ARLINGTON, VA

©2017 T. DILLARD

WWW.INTERIORFOOTPRINTS.COM

ALL ILLUSTRATIONS, DIMENSIONS AND SQUARE FOOTAGE ESTIMATES ARE APPROXIMATE AND MAY VARY FROM ACTUAL STRUCTURE. DIMENSIONS HAVE BEEN ROUNDED.

**ESTIMATED SQUARE FOOTAGE: 3550**



**MAIN LEVEL**

8'6" CEILING  
ESTIMATED SQUARE FOOTAGE: 1600

**LOWER LEVEL**

6'8" CEILING  
ESTIMATED SQUARE FOOTAGE: 1050

